



Twigg Cottage 1 Buxton Road, Ashford-In-The-Water, DE45 1QP



Twigg Cottage 1 Buxton Road

Price range £475,000 to £485,000

A Little Gem Oozing Charm & Character Features In An Idyllic Village.

A beautifully renovated three-bedroom end-terrace period cottage, occupying a peaceful setting in the picturesque Derbyshire village of Ashford in the Water, in the heart of the Peak District National Park. Skillfully refurbished by the present owners to an exceptionally high standard, this charming home effortlessly blends timeless character with stylish contemporary living, making it ideally suited as a main residence, weekend retreat or holiday cottage.

The highly sought-after village offers a wonderful community atmosphere with a local shop, cafés, traditional country inns and immediate access to an abundance of scenic walks and cycle trails. The market town of Bakewell, the renowned Chatsworth House and historic Haddon Hall are all just a short distance away.

The beautifully presented accommodation comprises an entrance lobby leading into a bespoke dining kitchen with a range of units and integrated appliances, a delightful triple-aspect sitting room with sash windows and shutters, exposed character features and a striking gritstone fireplace housing a log-burning stove. A door opens directly onto the enclosed garden.

The first-floor landing leads to two attractive double bedrooms, both featuring original fireplaces, together with a further study/bedroom and a beautifully appointed luxury bathroom finished to an exceptional standard.

To the exterior of the property is a charming cottage garden, designed for ease of maintenance and enjoyment, providing a peaceful outdoor retreat with cottage-style appeal.

A particularly valuable feature is the large detached stone workshop, showcasing exposed roof timbers and an original fireplace, offering excellent potential for a studio, hobby space or workshop.

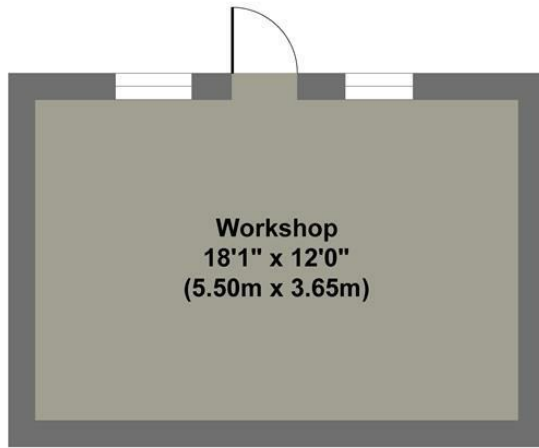


- Idyllic Derbyshire Village
- A Chocolate Box Cottage With Many Original Period Features
- Detached Stone Workshop
- Fully Renovated Throughout
- Ideal Main Home Or Holiday Cottage
- Excellent Local Cafes & Country Inns
- Access To Local Walks & Cycle Trails
- Easily Managed Cottage Style Garden
- Viewings: Bakewell Office

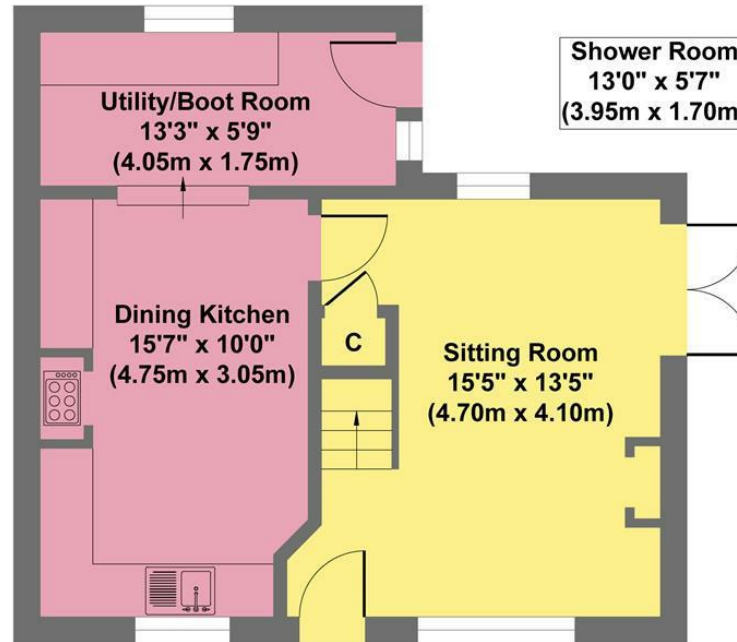




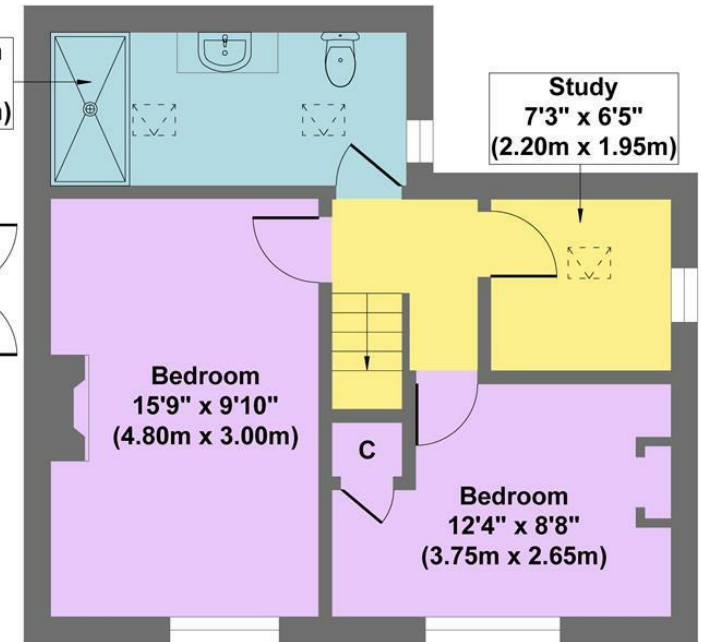
1 Buxton Road



Outbuilding
Approximate Floor Area
216 sq.ft
(20.07 sq.m.)



Ground Floor
Approximate Floor Area
444 sq.ft
(41.22 sq.m.)



First Floor
Approximate Floor Area
444 sq.ft
(41.22 sq.m.)

Approx. Gross Internal Floor Area 1104 sq.ft / 102.51 sq.m

Illustration for identification purposes only. Measurements are approximate, not to scale."

While we endeavour to make our sales particulars fair, accurate and reliable, they are only a general guide to the property and, accordingly, if there is any point, which is of particular importance to you, please contact the relevant office. The Agents have not tested any apparatus, equipment, fittings or services and so cannot verify they are in working order. The buyer is advised to obtain verification. Please note all the measurement details are approximate and should not be relied upon as exact. All plans, floor plans and maps are for guidance purposes only and are not to scale. Under no circumstances should they be relied upon as exact or for use in planning carpets and other such fixtures, fittings or furnishings. YOUR HOME IS AT RISK IF YOU DO NOT KEEP UP REPAYMENTS ON A MORTGAGE OR OTHER LOAN SECURED ON IT. 'A Life Assurance policy may be requested.' 'Written Quotations of credit terms available on request.'

Banner Cross
 T: 0114 268 3241
 E: bannercross@saxtonmee.co.uk
www.saxtonmee.co.uk

Hathersage
 T: 01433 650009
 E: hathersage@saxtonmee.co.uk

Bakewell
 T: 01629 815307
 E: bakewell@saxtonmee.co.uk

Matlock
 T: 01629 828250
 E: matlock@saxtonmee.co.uk

